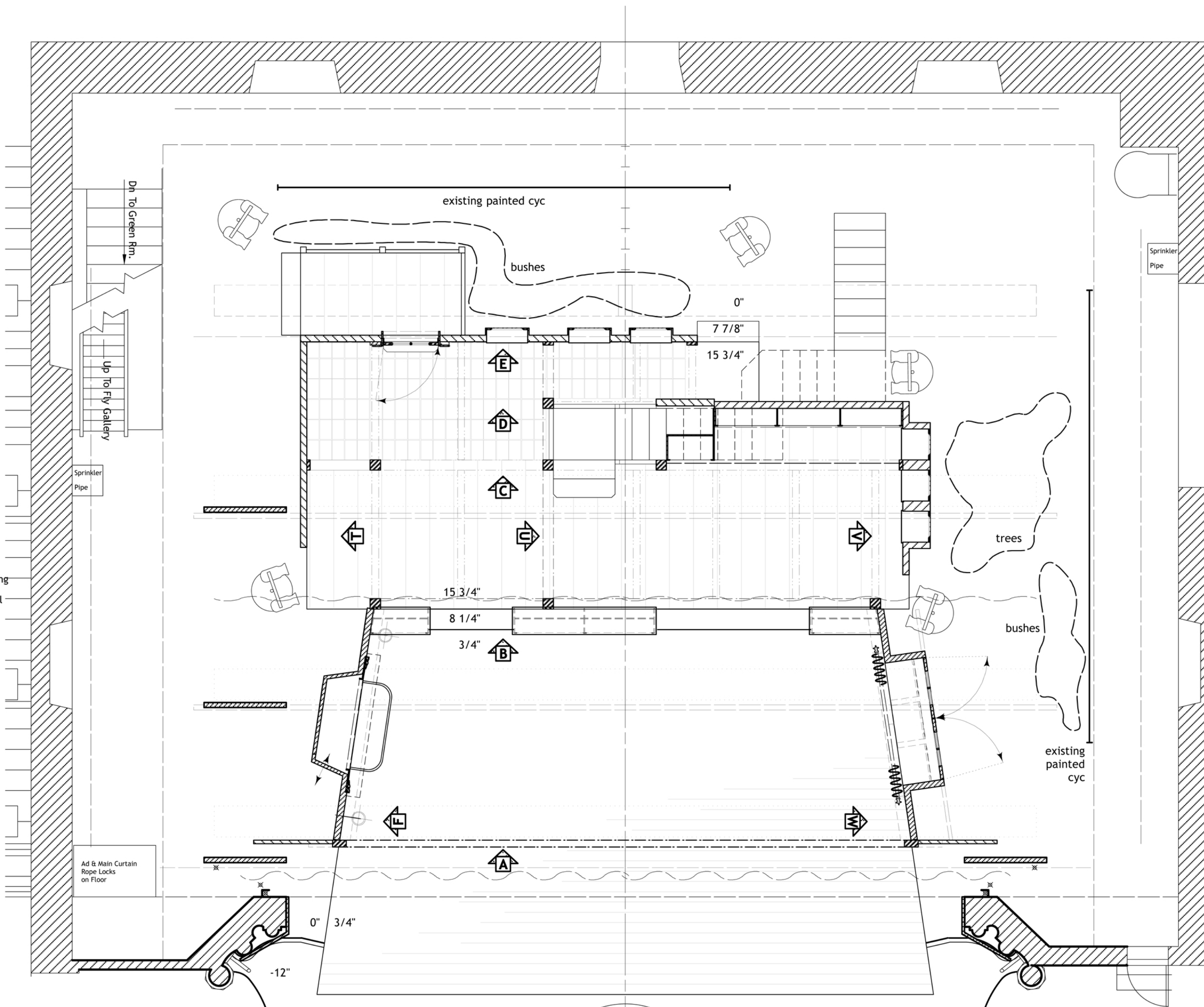


- Soft Border
- 25:
- 24:
- 23: painted cyc
- 22:
- 21:
- 20:
- 19:
- 4th Electric Truss
- Soft Border
- 18:
- 17:
- 16:
- 15:
- 14:
- 13:
- 3rd Electric Truss
- Spotline Legs
- Permanent Header
- 12:
- 11:
- 10: portal masking
- 9: second portal
- 8:
- 7:
- 6:
- 2nd Electric Truss
- Spotline Legs
- Permanent Header
- 5:
- 4:
- 3:
- 2:
- 1st Electric Truss
- Spotline Legs
- Soft Border
- Main Curtain
- Ad Curtain
- Fire Curtain
- Plaster Line
- 1: main portal



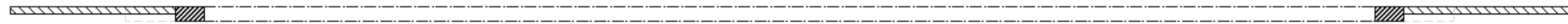
is this a hole for the conductor?
is there a plug?

VARIOUS NOTES
the main curtain is used
furniture not shown, chuch & i are still working that out
the off stage edges of the platforms are not defined on the elevations, as to whether the walls sit on the raised decks or off of them the dimensions are to the raised levels
the USR area has a full ceiling/beam structure
the USL area has a full ceiling/beam structure
confirm if the SL cyc/masking idea is feasible

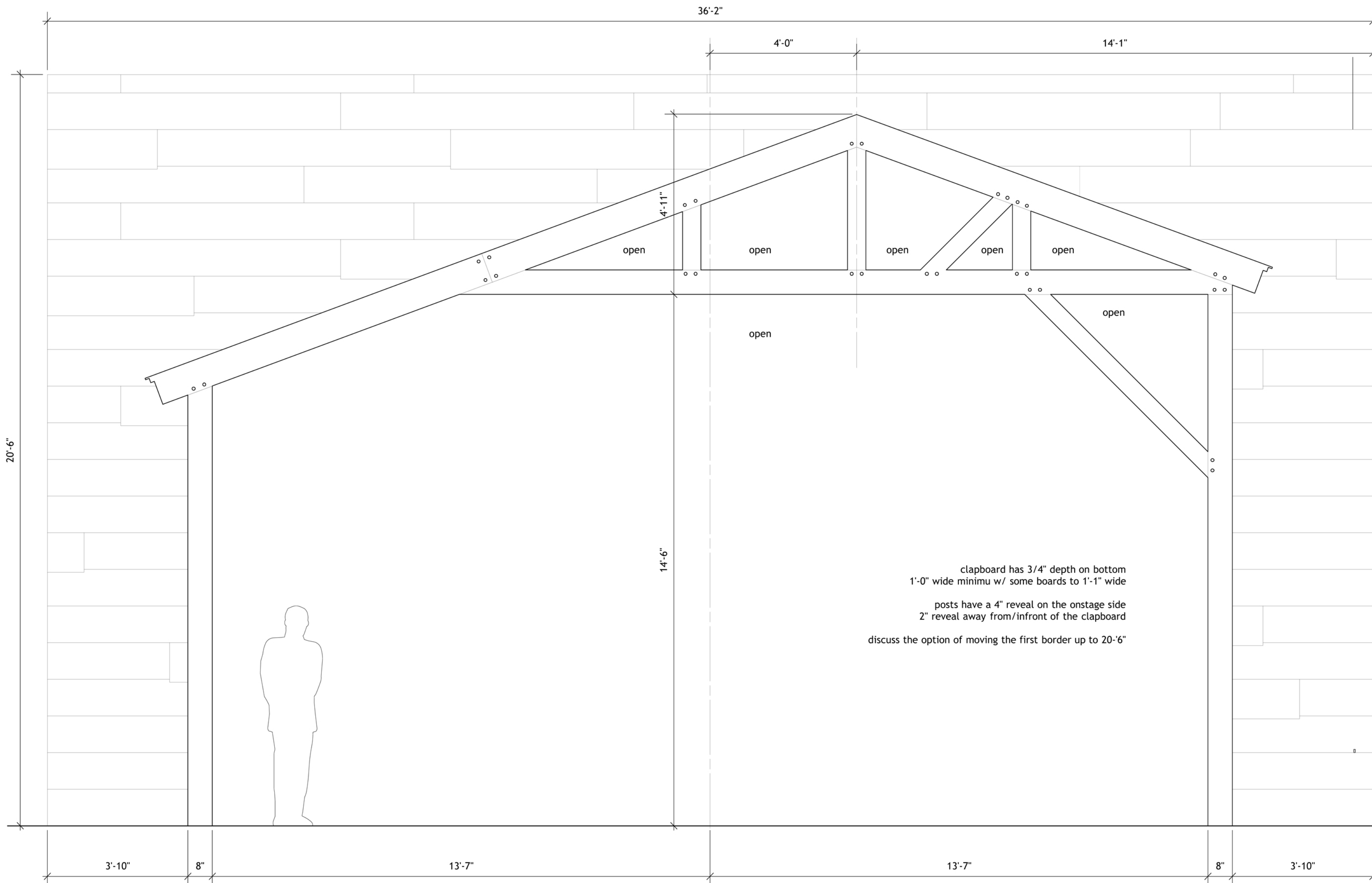
NOTES ABOUT THE DECK
6\"/>

S.D. 2570
SCENIC DESIGNER

DEATHTRAP fulton theatre 2010
revised ground plan for budget estimates | 1/4\"/>



unit A | plan view



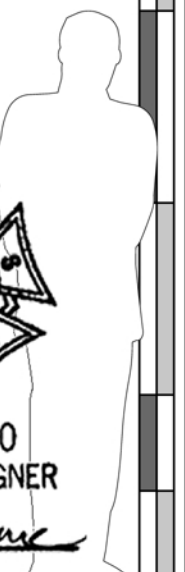
clapboard has 3/4" depth on bottom
 1'-0" wide minimum w/ some boards to 1'-1" wide
 posts have a 4" reveal on the onstage side
 2" reveal away from/infront of the clapboard
 discuss the option of moving the first border up to 20'-6"

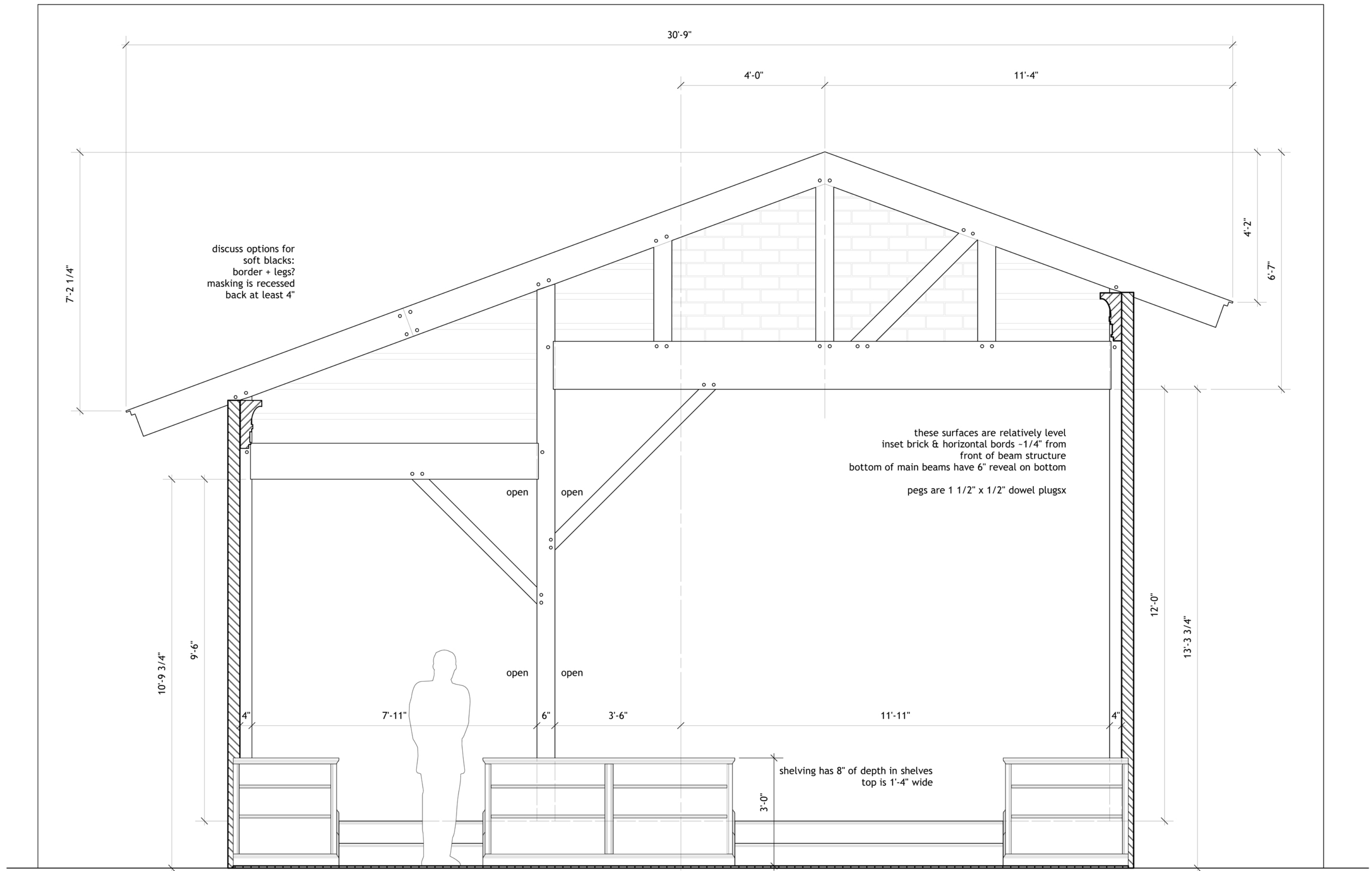
unit A | front elevation



S.D. 2570
SCENIC DESIGNER

SIGNATURE *[Signature]*





discuss options for soft blacks: border + legs? masking is recessed back at least 4"

these surfaces are relatively level inset brick & horizontal bords -1/4" from front of beam structure bottom of main beams have 6" reveal on bottom pegs are 1 1/2" x 1/2" dowel plugs

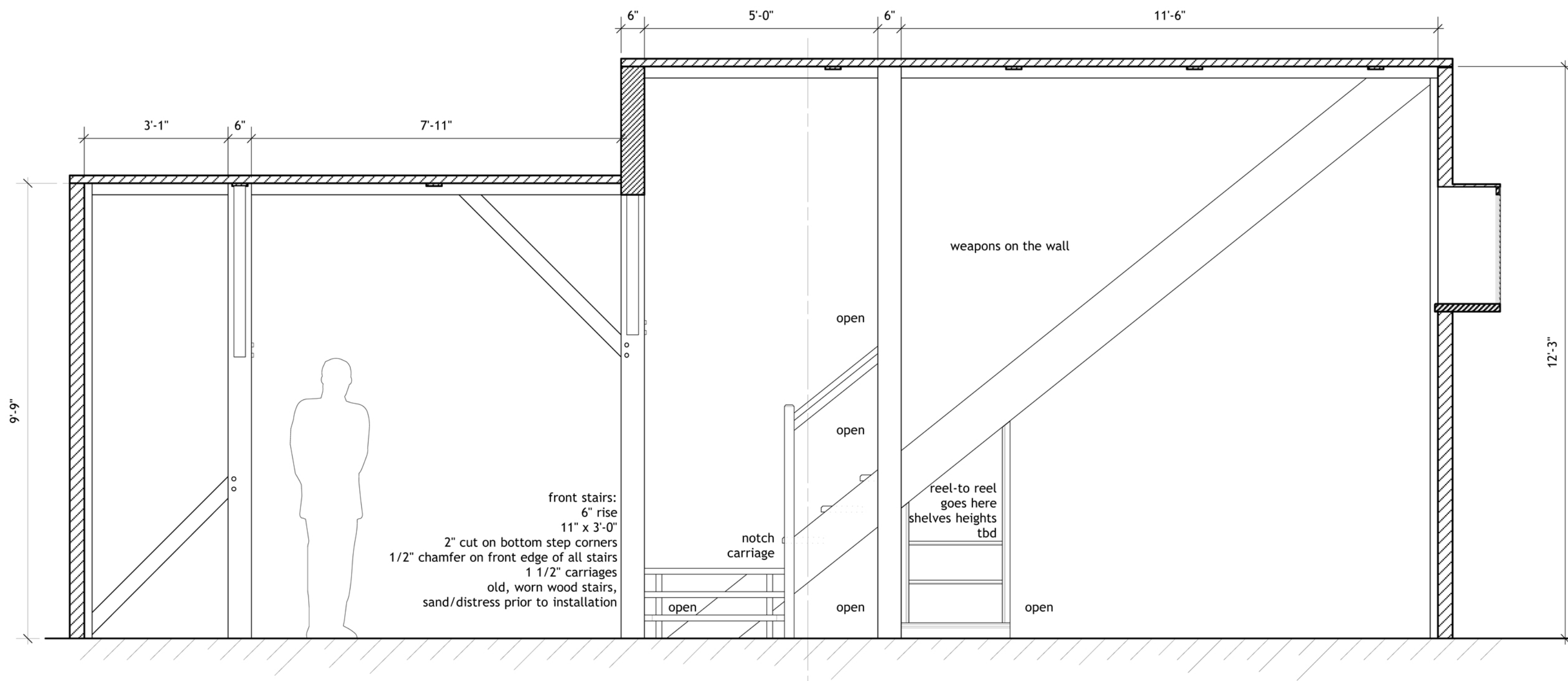
shelving has 8" of depth in shelves top is 1'-4" wide

unit B | front elevation

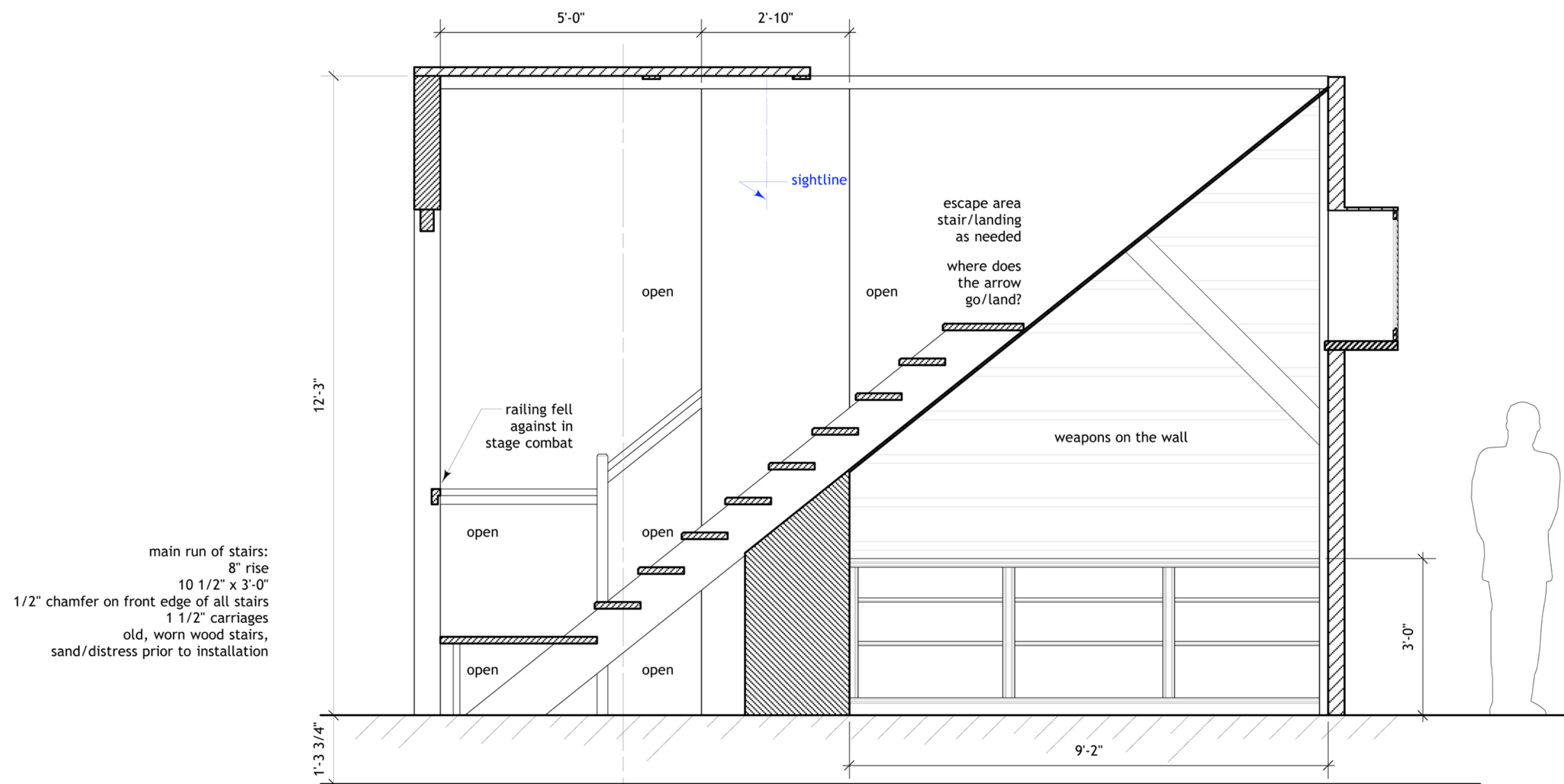


S.D. 2570
SCENIC DESIGNER

SIGNATURE *[Signature]*

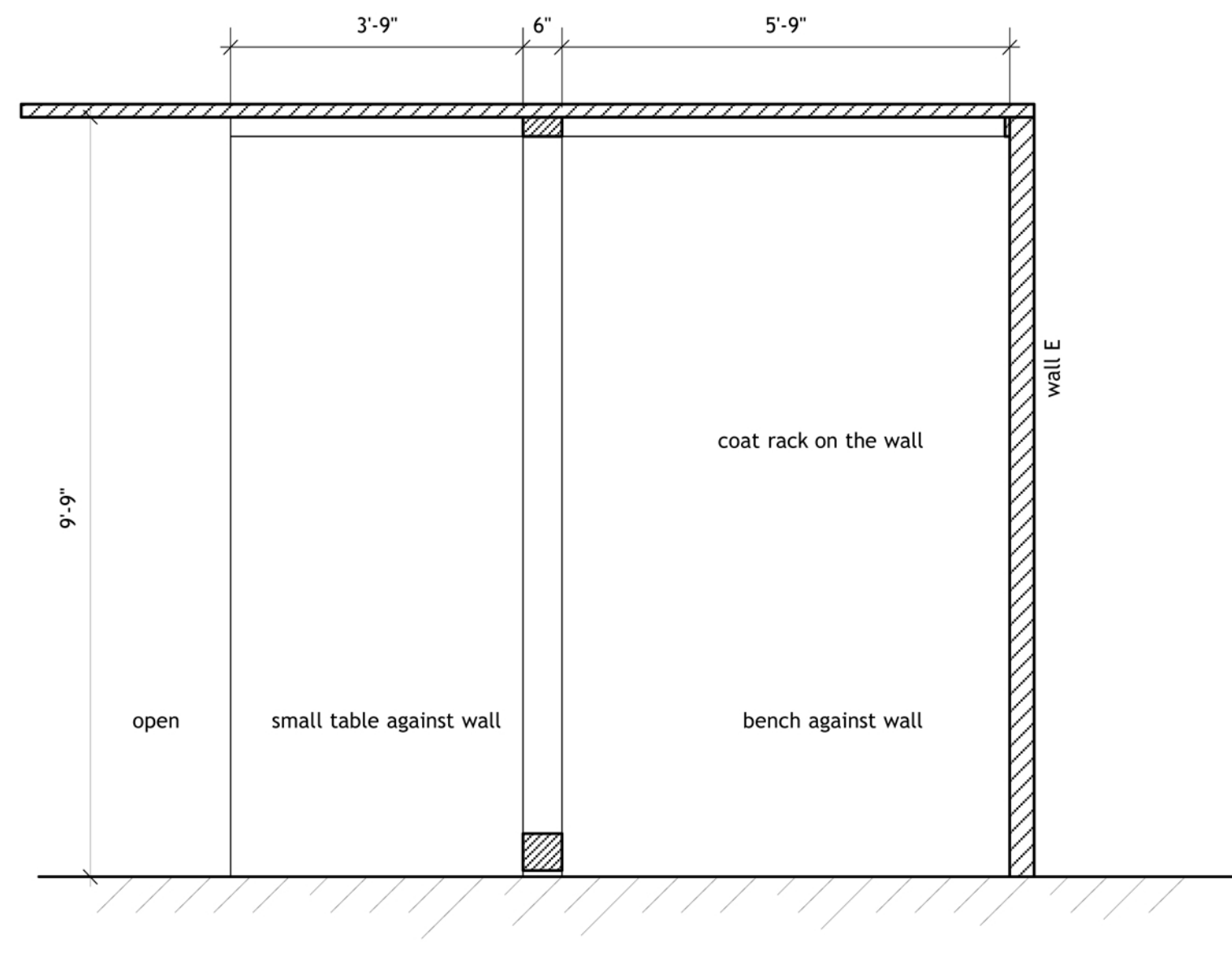


unit C | front elevation

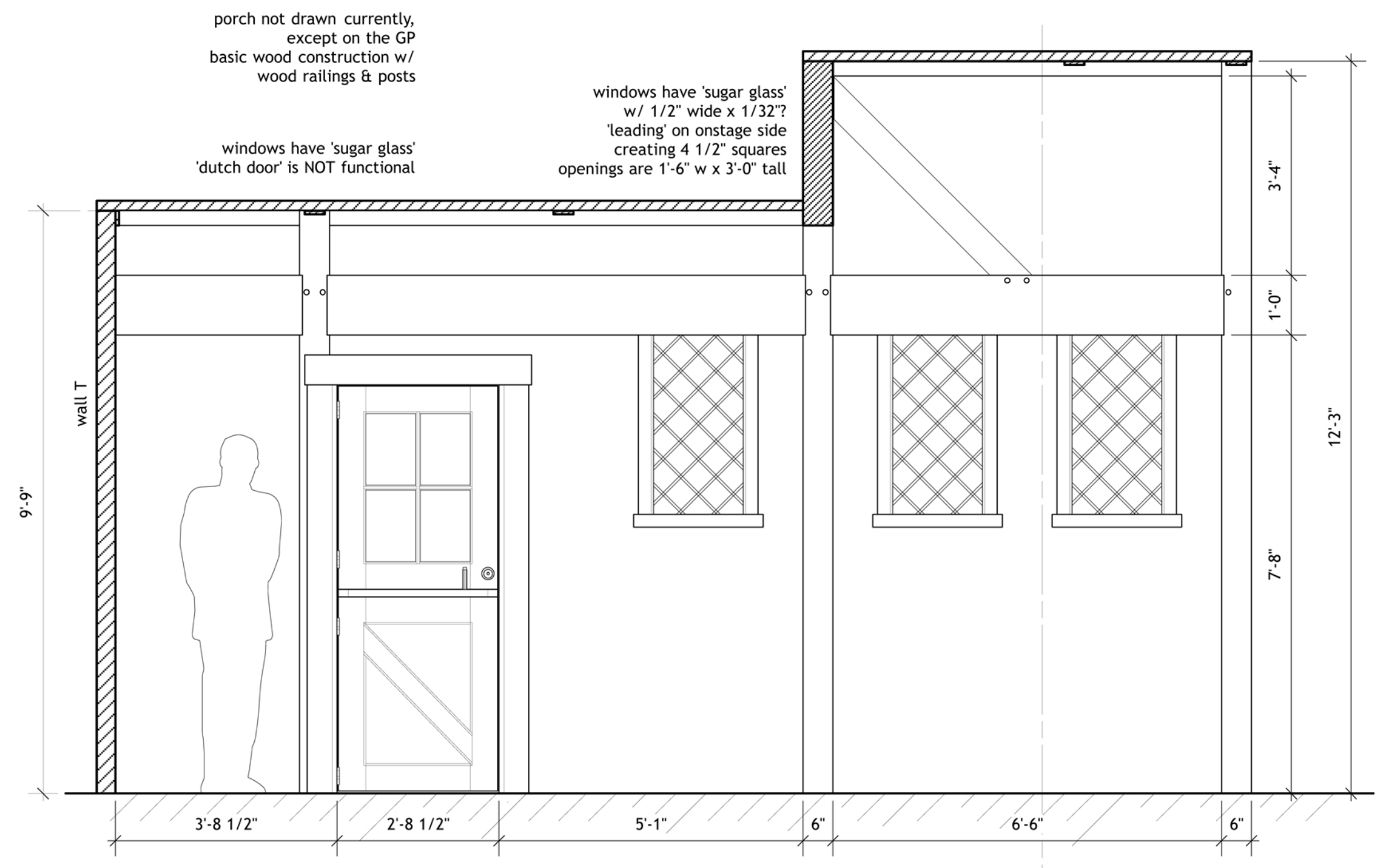


unit D | front elevation

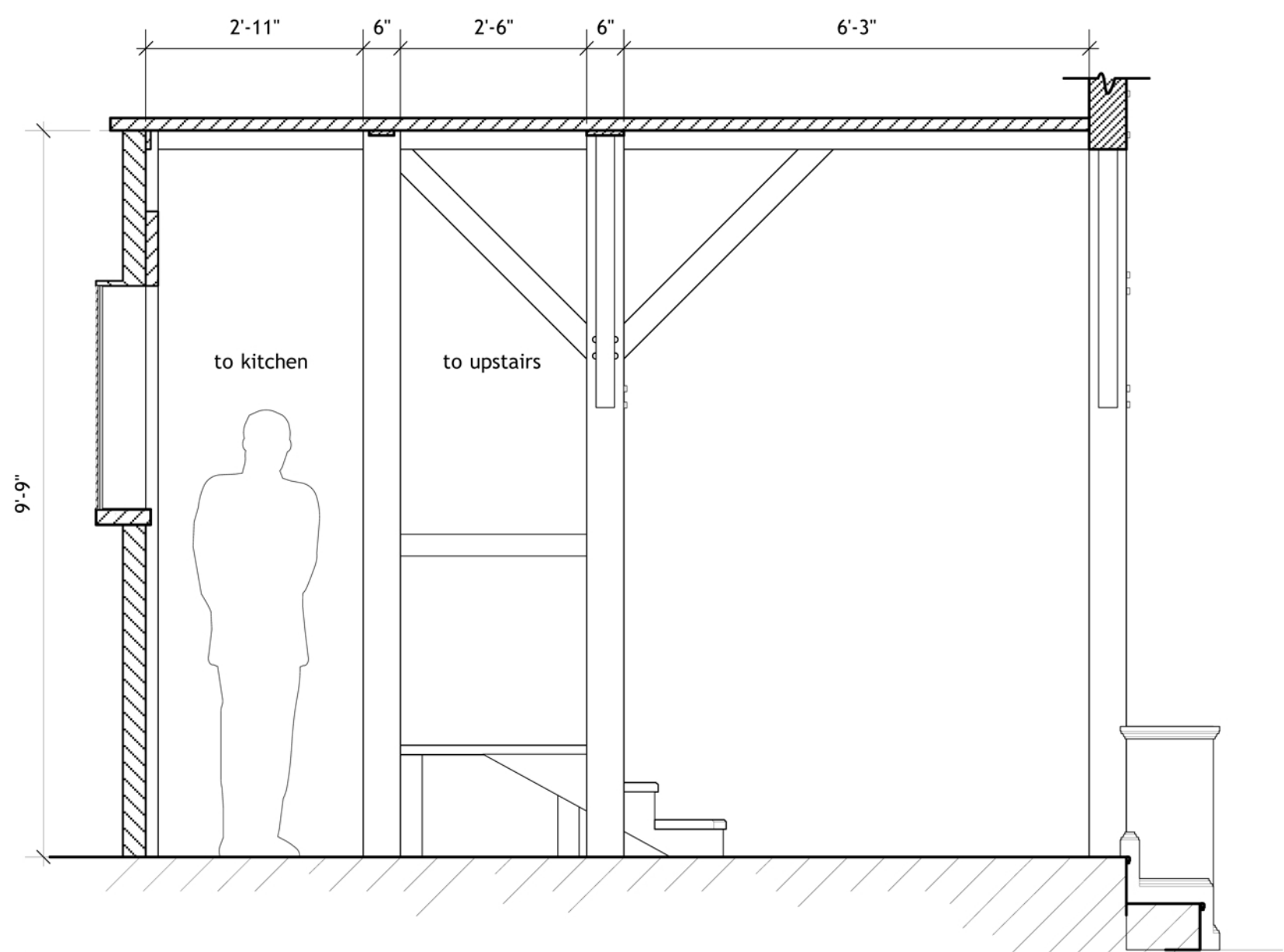




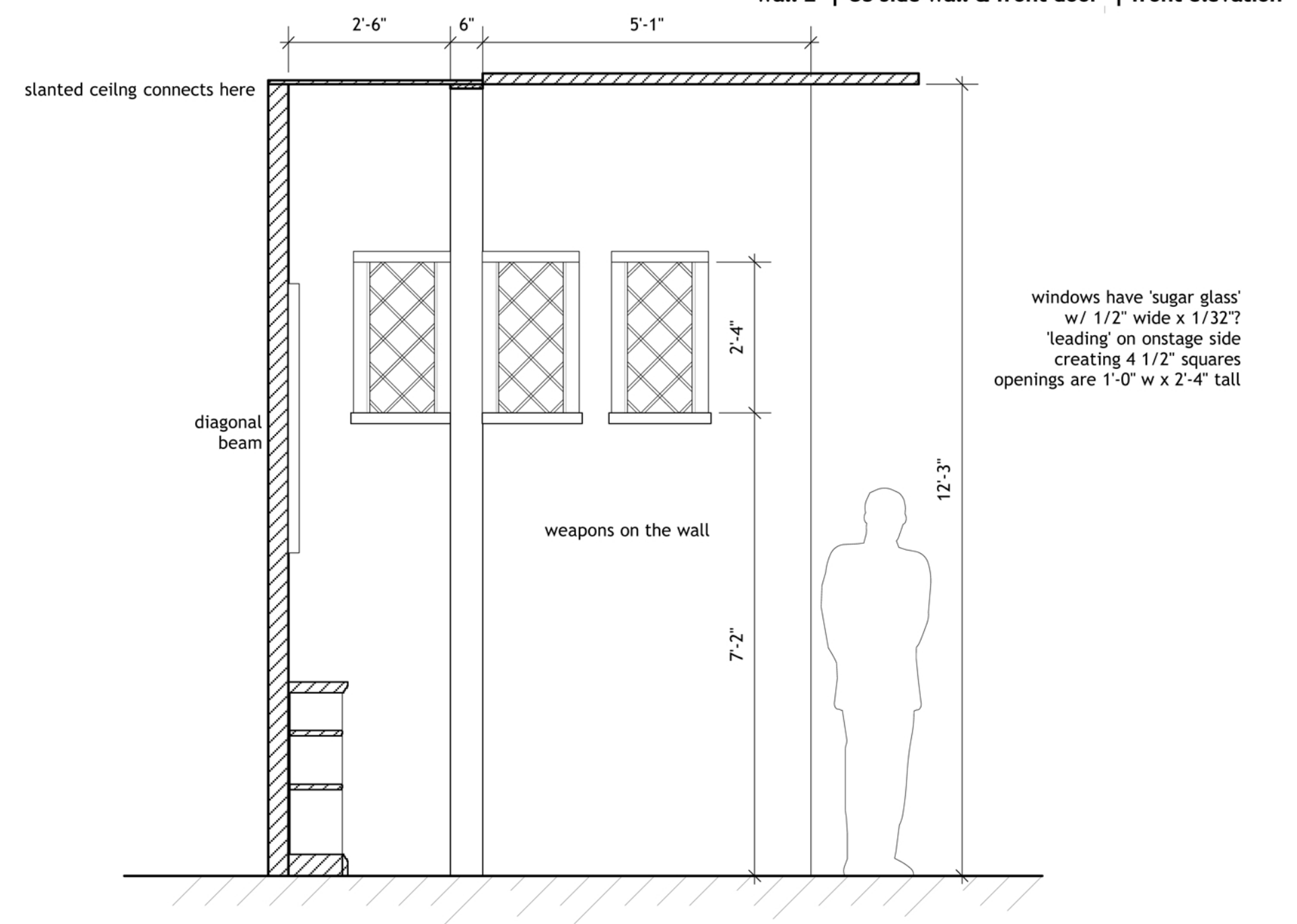
wall T | USR side wall | front elevation



wall E | US side wall & front door | front elevation



view U | USC posts & diagonals | elevation looking SL

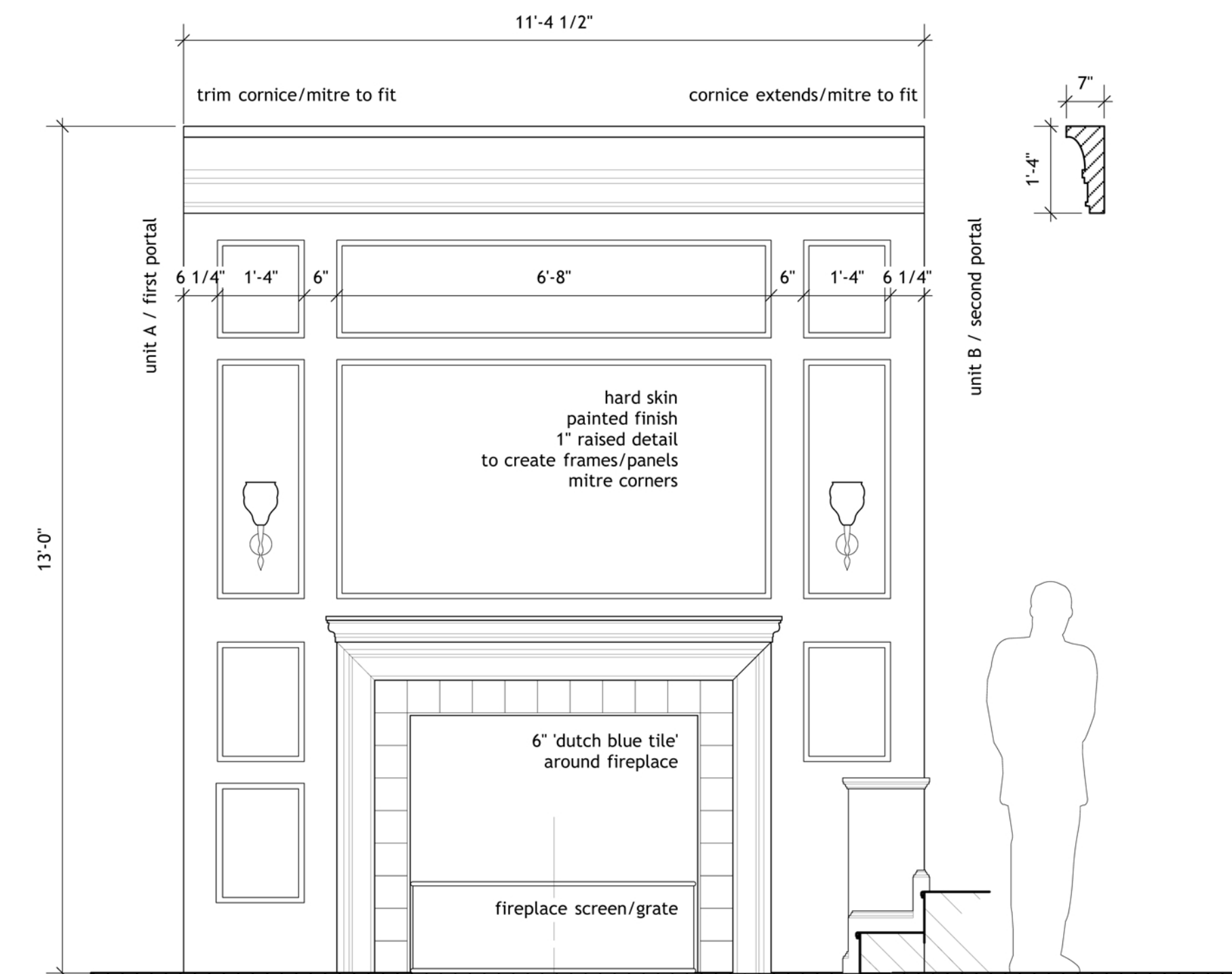
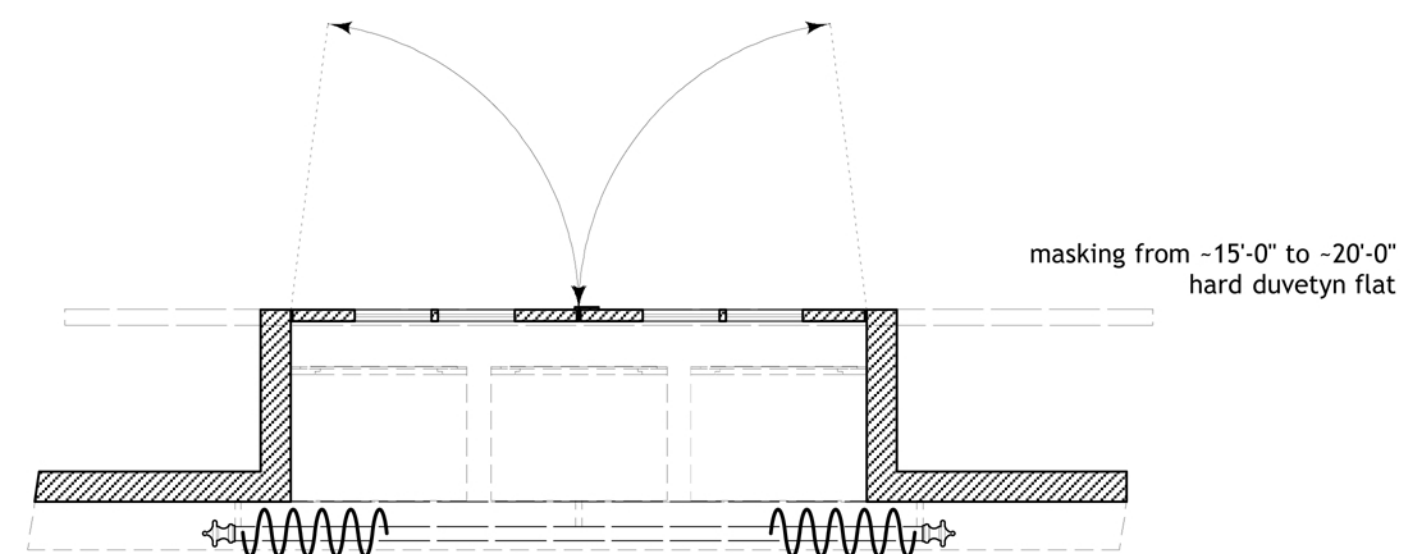
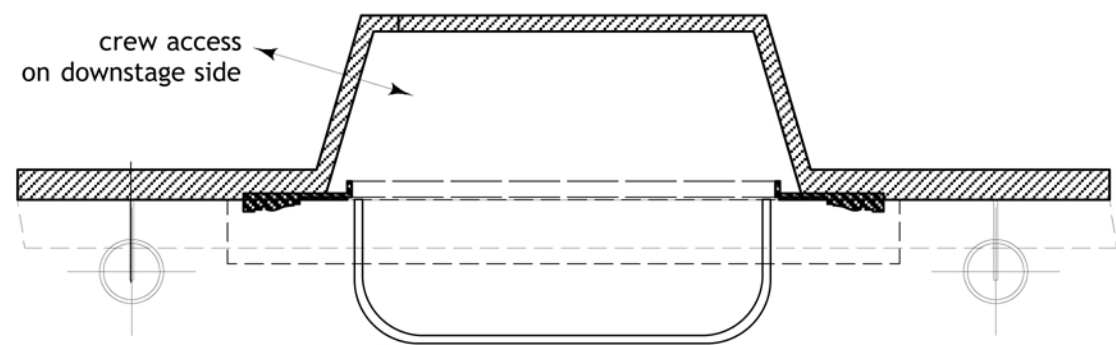


wall V | USL wall | front elevation

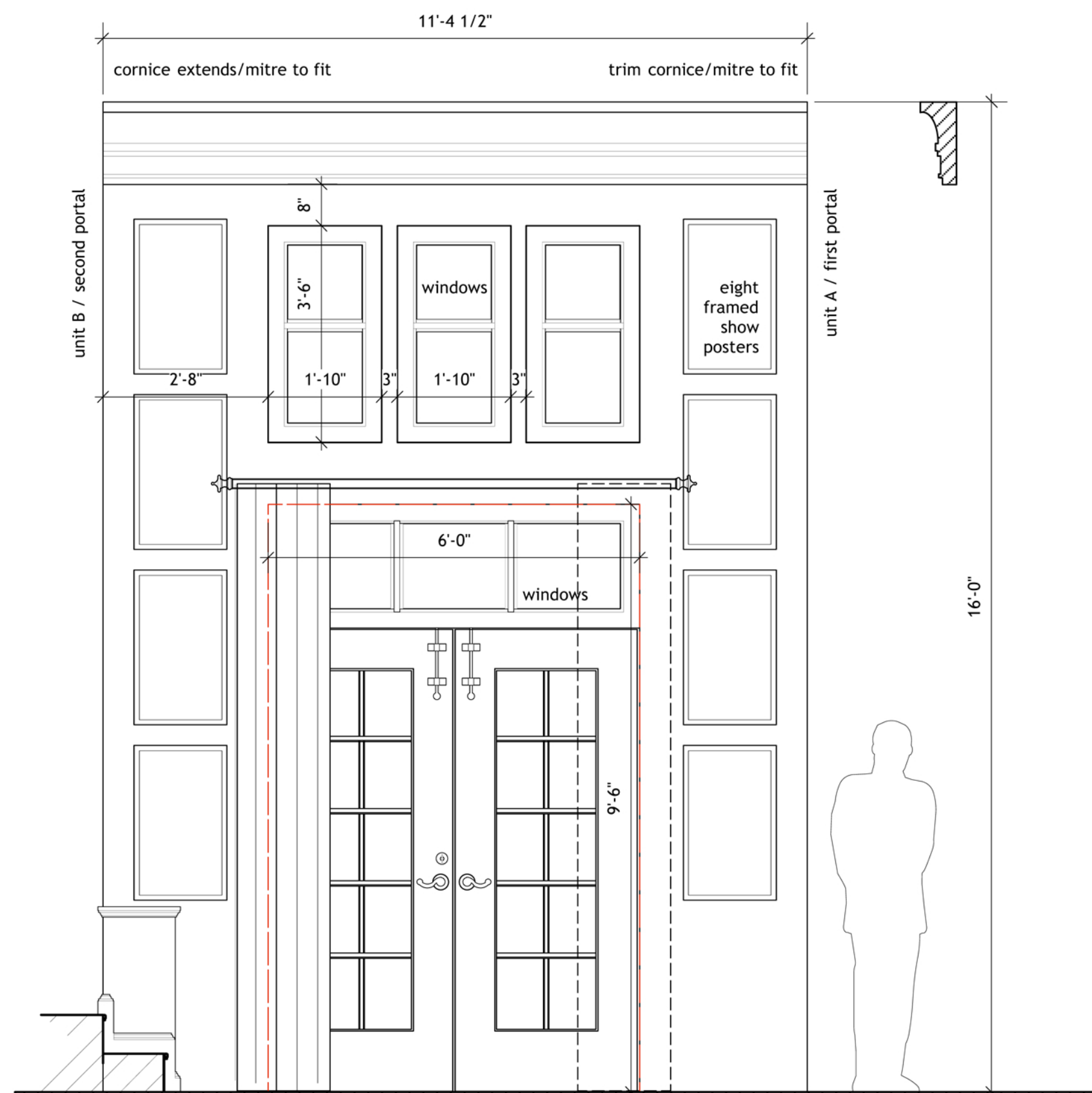


S.D. 2570
SCENIC DESIGNER

SIGNATURE *[Signature]*



wall A | SR fireplace | front elevation



wall W | SL garden door | front elevation



S.D. 2570
SCENIC DESIGNER

SIGNATURE *[Signature]*